

Drainage and Gully Works Contract 2009-2014

Client: Royal Borough of Kensington and Chelsea
Start Date: 2009
Finish Date: 2014
Duration: 5 years
Value: £400K per annum
Location: Kensington and Chelsea



THE ROYAL BOROUGH OF
**KENSINGTON
AND CHELSEA**

CASE STUDY DETAILS

(general description of work carried out, number of teams, quantities of work, materials, machines, etc, programme restraints, project/programme challenges, anything unusual, special techniques, innovations, etc.)

Following the successful completion of an initial term, Cappagh was delighted to be re-awarded the Drainage and Gully Works contract in 2009 by the Royal Borough of Kensington and Chelsea.

The geographical area of operation of this contract is within the Borough boundaries of Kensington and Chelsea. This is a highly populated and affluent area of London.

Cappagh provide a full range of highway drainage works, from complete reconstruction of road gully pans, including cover and frame and connections to pan replacements and pipe repairs.

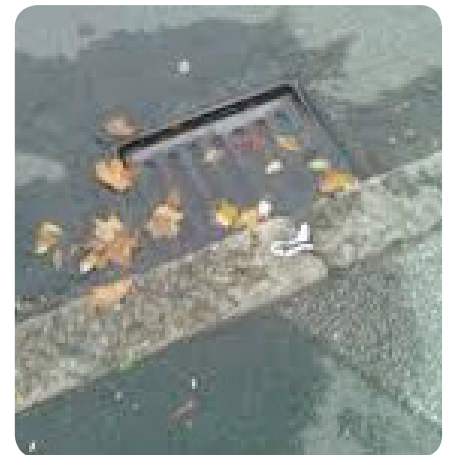
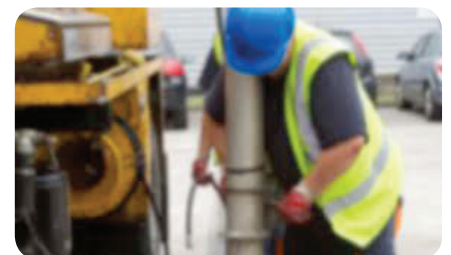
The full scope of works carried out under the contract includes replacement of gully pans and construction of connections to sewers, to be predominately carried out in a heading, but some in open cut; Clearing of blocked drainage pipes using rods and jetting equipment; Repair and renewal of private drain connections to the sewer, with work mostly carried out in a heading; Provision of emergency services with 2 hour response time; Arranging for parking bay suspensions and notifying residents and businesses affected by the works; Reinstatement of carriageway openings in asphalt, granite setts, paving stones etc; Reinstatement of carriageway markings following the carriageway reinstatement works.

We are responsible for the surveying of every job on receipt of the Order from the council and will note the anticipated job duration, impact on emergency services and parking bay suspensions required as part of the on site survey.

We will typically employ 3 Gangs at any one time on this contract, two carrying out shaft and heading works and the third carrying out gully frame and cover repairs and replacement. We complete 6 shaft and headings, 4 gully pan reconstructions and 5 gully frame and cover replacements in an average week.

We employ a range of in-house plant including Combination units, JCBs and cranes when carrying out the larger and more complex shaft and heading works.

Work includes carriageway reinstatement including road markings and anti-skid as required by the Engineer throughout the whole of The Royal Borough of Kensington and Chelsea.



KEY ISSUES

- Working in a busy urban environment
- Deep excavation works
- Arranging Parking Bay Suspensions prior to and then removing after works completion

Cappagh House,
Waterside Way,
Wimbledon
SW17 0HB

0208 947 4000

info@cappagh.co.uk